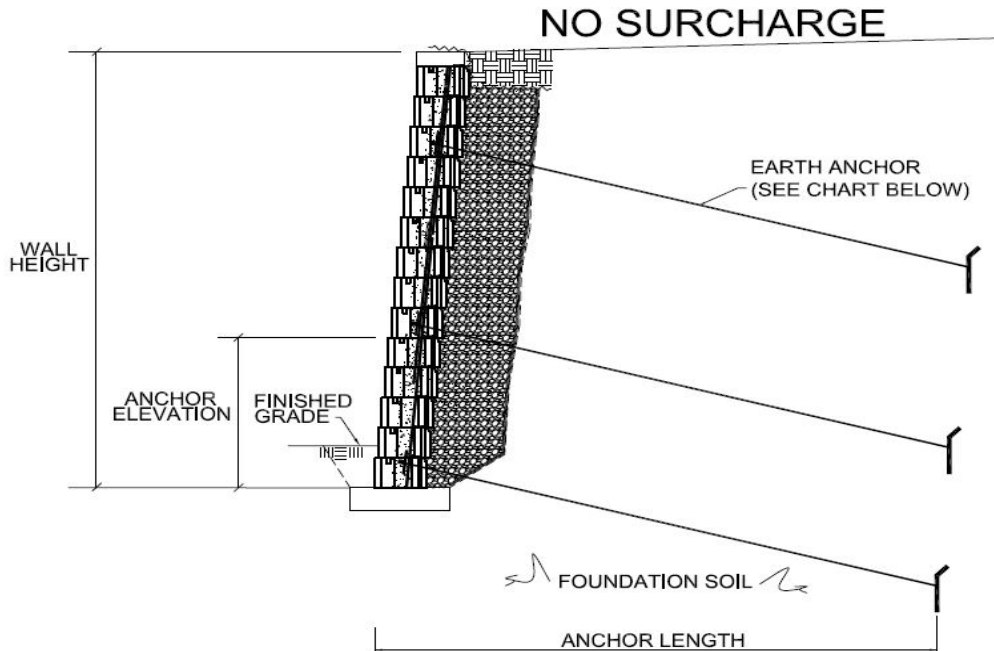


TRINITY LEVER WALL SYSTEM

Earth Anchor Estimating Charts



No Surcharge , $\gamma = 120$ PCF

$\Phi = 28^\circ$ Silt/Clayey Soils			$\Phi = 30^\circ$ Sandy Soils			$\Phi = 32^\circ$ Gravel Soils		
Wall Height	Anchor Elevation	Anchor Length	Wall Height	Anchor Elevation	Anchor Length	Wall Height	Anchor Elevation	Anchor Length
3.0'	N/A	N/A	3.0'	N/A	N/A	3.0'	N/A	N/A
4.3'	2.00	4.5'	4.3'	2.00	4.0'	4.3'	2.00	3.5'
5.7'	0.67	6.0'	5.7	0.67	5.5'	5.7'	0.67	5.0'
	3.34	6.0'		3.34	5.5'		3.34	5.0'
7.0'	1.34	7.5'	7.0'	1.34	6.5'	7.0'	1.34	6.0'
	5.34	7.5'		5.34	6.5'		5.34	6.0'
8.3'	2.00	8.5'	8.3'	2.00	8.0'	8.3'	2.00	7.0'
	6.00	8.5'		6.00	8.0'		6.00	7.0'
9.7'	0.67	10.0'	9.7'	0.67	9.0'	9.7'	0.67	8.0'
	3.34	10.0'		3.34	9.0'		3.34	8.0'
	7.34	10.0'		7.34	9.0'		7.34	8.0'

The soils effective friction angle and unit weight as outlined above is assumed to exist in the retained and foundation zones. Earth anchor shall be 20 kip MR1 test load or approved equivalent.

FOR STAMPED FINAL DESIGNS BY A PROFESSIONAL ENGINEER CALL 678.594.3451.



Earth Wall Products, LLC
Marietta, Georgia USA
Tel: 678.594.3451
www.earthwallproducts.com

The information contained herein has been compiled by Earth Wall Products, LLC and to the best of our knowledge, accurately represents the Trinity Block product use in the applications which are illustrated. Final determination of the suitability for the use contemplated and its manner of use are the sole responsibility of the user. Final structural design and analysis shall be performed by a qualified engineer.