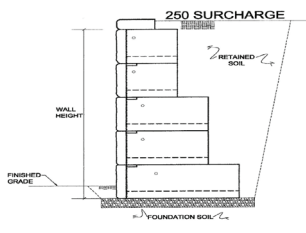


FORIX STANDARD TYPICAL CROSS SECTION

No Surcharge, $\gamma = 120$ PCF

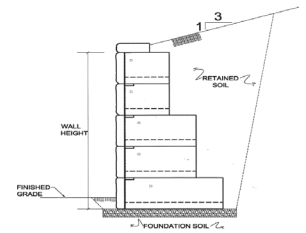
$\Phi = 28'$ Silt/Clayey Soils					$\Phi = 30'$ Sandy Soils					$\Phi = 34'$ Gravel Soils							
Wall Height	Block Size Needed				Wall Height	Block Size Needed				Wall Height	Block Size Needed						
	24"	36"	48"	60"	72"		24"	36"	48"	60"	72"		24"	36"	48"	60"	72"
1.5'	1	0	0	0	0	1.5'	1	0	0	0	0	1.5'	1	0	0	0	0
3.0'	2	0	0	0	0	3.0'	2	0	0	0	0	3.0'	2	0	0	0	0
4.5'	3	0	0	0	0	4.5'	3	0	0	0	0	4.5'	3	0	0	0	0
6.0'	3	1	0	0	0	6.0'	3	1	0	0	0	6.0'	4	0	0	0	0
7.5'	2	2	1	0	0	7.5'	4	1	0	0	0	7.5'	4	1	0	0	0
9.0'	2	2	1	1	0	9.0'	3	2	1	0	0	9.0'	1	5	0	0	0
10.5'	1	0	2	4	1	10.5'	3	2	1	1	0	10.5'	3	2	2	0	0
12.0'	1	1	1	0	5	12.0'	2	1	1	4	0	12.0'	1	1	6	0	0
13.5'						13.5'	2	1	2	2	2	13.5'	3	2	2	2	0
15.0'						15.0'	1	0	0	1	8	15.0'	1	0	1	8	0
16.5'						16.5'	2	2	3	2	2	16.5'	2	2	3	2	2
18.0'						18.0'	1	0	1	1	9	18.0'	1	0	1	1	9
19.5'						19.5'						19.5'					
21.0'						21.0'						21.0'					
22.5'						22.5'						22.5'					



FORIX STANDARD TYPICAL CROSS SECTION

250 PSF Surcharge, $\gamma = 120$ PCF

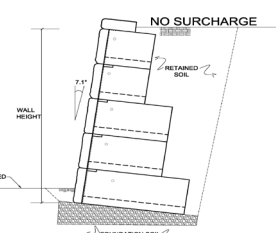
$\Phi = 28'$ Silt/Clayey Soils					$\Phi = 30'$ Sandy Soils					$\Phi = 34'$ Gravel Soils							
Wall Height	Block Size Needed				Wall Height	Block Size Needed				Wall Height	Block Size Needed						
	24"	36"	48"	60"	72"		24"	36"	48"	60"	72"		24"	36"	48"	60"	72"
1.5'	1	0	0	0	0	1.5'	1	0	0	0	0	1.5'	1	0	0	0	0
3.0'	0	2	0	0	0	3.0'	0	2	0	0	0	3.0'	1	1	0	0	0
4.5'	0	2	1	0	0	4.5'	0	2	1	0	0	4.5'	1	2	0	0	0
6.0'	0	2	1	1	0	6.0'	0	2	2	0	0	6.0'	1	3	0	0	0
7.5'	0	2	1	1	1	7.5'	0	2	2	1	0	7.5'	1	2	2	0	0
9.0'	0	2	0	2	2	9.0'	0	1	1	4	0	9.0'	1	2	3	0	0
10.5'						10.5'	0	2	1	2	2	10.5'	1	2	2	2	0
12.0'						12.0'						12.0'	1	2	0	5	0
13.5'						13.5'						13.5'	1	2	2	2	2
15.0'						15.0'						15.0'	1	1	1	2	5
16.5'						16.5'						16.5'					
18.0'						18.0'						18.0'					
19.5'						19.5'						19.5'					
21.0'						21.0'						21.0'					
22.5'						22.5'						22.5'					



FORIX STANDARD TYPICAL CROSS SECTION

3:1 Surcharge, $\gamma = 120$ PCF

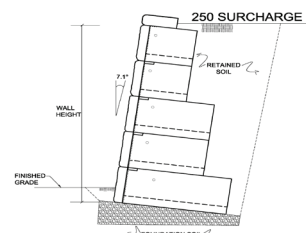
$\Phi = 28'$ Silt/Clayey Soils					$\Phi = 30'$ Sandy Soils					$\Phi = 34'$ Gravel Soils							
Wall Height	Block Size Needed				Wall Height	Block Size Needed				Wall Height	Block Size Needed						
	24"	36"	48"	60"	72"		24"	36"	48"	60"	72"		24"	36"	48"	60"	72"
1.5'	1	0	0	0	0	1.5'	1	0	0	0	0	1.5'	1	0	0	0	0
3.0'	2	0	0	0	0	3.0'	2	0	0	0	0	3.0'	2	0	0	0	0
4.5'	2	1	0	0	0	4.5'	2	1	0	0	0	4.5'	3	0	0	0	0
6.0'	0	1	3	0	0	6.0'	0	4	0	0	0	6.0'	3	1	0	0	0
7.5'	0	0	1	4	0	7.5'	0	1	4	0	0	7.5'	2	3	0	0	0
9.0'						9.0'	0	1	1	4	0	9.0'	3	1	2	0	0
10.5'						10.5'						10.5'	2	1	4	0	0
12.0'						12.0'						12.0'	2	1	2	3	0
13.5'						13.5'						13.5'	2	1	2	2	2
15.0'						15.0'						15.0'					
16.5'						16.5'						16.5'					
18.0'						18.0'						18.0'					
19.5'						19.5'						19.5'					
21.0'						21.0'						21.0'					
22.5'						22.5'						22.5'					



FORIX STANDARD TYPICAL CROSS SECTION

7.1' Batter, No Surcharge, $\gamma = 120$ PCF

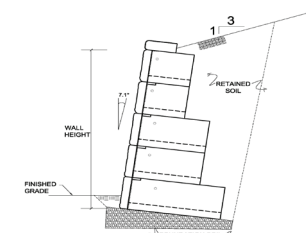
$\Phi = 28'$ Silt/Clayey Soils					$\Phi = 30'$ Sandy Soils					$\Phi = 34'$ Gravel Soils							
Wall Height	Block Size Needed				Wall Height	Block Size Needed				Wall Height	Block Size Needed						
	24"	36"	48"	60"	72"		24"	36"	48"	60"	72"		24"	36"	48"	60"	72"
1.5'	1	0	0	0	0	1.5'	1	0	0	0	0	1.5'	1	0	0	0	0
3.0'	2	0	0	0	0	3.0'	2	0	0	0	0	3.0'	2	0	0	0	0
4.5'	3	0	0	0	0	4.5'	3	0	0	0	0	4.5'	3	0	0	0	0
6.0'	4	0	0	0	0	6.0'	4	0	0	0	0	6.0'	4	0	0	0	0
7.5'	3	2	0	0	0	7.5'	5	0	0	0	0	7.5'	5	0	0	0	0
9.0'	3	3	0	0	0	9.0'	4	2	0	0	0	9.0'	4	2	0	0	0
10.5'	3	3	1	0	0	10.5'	5	0	0	0	0	10.5'	4	3	0	0	0
12.0'	3	1	4	0	0	12.0'	4	2	2	0	0	12.0'	1	7	0	0	0
13.5'	3	2	3	1	0	13.5'	2	1	6	0	0	13.5'	4	3	2	0	0
15.0'	2	1	2	5	0	15.0'	3	3	2	2	0	15.0'	2	2	6	0	0
16.5'	2	2	1	4	2	16.5'	3	1	0	7	0	16.5'	4	3	2	2	0
18.0'	1	1	0	5	5	18.0'	3	2	1	4	2	18.0'	3	1	1	7	0
19.5'						19.5'	1	1	1	1	9	19.5'	4	2	2	3	2
21.0'						21.0'						21.0'	3	2	1	1	7
22.5'						22.5'						22.5'	2	1	0	1	11



FORIX STANDARD TYPICAL CROSS SECTION

7.1' Batter, 250 PSF Surcharge, $\gamma = 120$ PCF

$\Phi = 28'$ Silt/Clayey Soils					$\Phi = 30'$ Sandy Soils					$\Phi = 34'$ Gravel Soils							
Wall Height	Block Size Needed				Wall Height	Block Size Needed				Wall Height	Block Size Needed						
	24"	36"	48"	60"	72"		24"	36"	48"	60"	72"		24"	36"	48"	60"	72"
1.5'	1	0	0	0	0	1.5'	1	0	0	0	0	1.5'	1	0	0	0	0
3.0'	2	0	0	0	0	3.0'	2	0	0	0	0	3.0'	2	0	0	0	0
4.5'	2	1	0	0	0	4.5'	2	1	0	0	0	4.5'	3	0	0	0	0
6.0'	1	3	0	0	0	6.0'	2	2	0	0	0	6.0'	3	1	0	0	0
7.5'	2	2	1	0	0	7.5'	1	4	0	0	0	7.5'	3	2	0	0	0
9.0'	2	0	4	0	0	9.0'	2	3	1	0	0	9.0'	2	4	0	0	0
10.5'	2	1	1	3	0	10.5'	2	3	2	0	0	10.5'	3	2	2	0	0
12.0'	2	2	1	1	2	12.0'	2	3	2	1	0	12.0'	2	1	5	0	0
13.5'	2	1	1	1	4	13.5'	2	3	2	2	0	13.5'	2	1	1	5	0
15.0'						15.0'	0	1	0	9	0	15.0'	2	1	2	5	0
16.5'						16.5'	2	2	1	2	4	16.5'	3	2	2	2	2
18.0'						18.0'						18.0'	3	2	1	1	5
19.5'						19.5'						19.5'	1	1	1	2	8
21.0'						21.0'						21.0'					
22.5'						22.5'						22.5'					



FORIX STANDARD TYPICAL CROSS SECTION

7.1' Batter, 3:1 Surcharge, $\gamma = 120$ PCF

$\Phi = 28'$ Silt/Clayey Soils					$\Phi = 30'$ Sandy Soils					$\Phi = 34'$ Gravel Soils							
Wall Height	Block Size Needed				Wall Height	Block Size Needed				Wall Height	Block Size Needed						
	24"	36"	48"	60"	72"		24"	36"	48"	60"	72"		24"	36"	48"	60"	72"
1.5'	1	0	0	0	0	1.5'	1	0	0	0	0	1.5'	1	0	0	0	0
3.0'	2	0	0	0	0	3.0'	2	0	0	0	0	3.0'	2	0	0	0	0
4.5'	3	0	0	0	0	4.5'	3	0	0	0	0	4.5'	3	0	0	0	0
6.0'	3	1	0	0	0	6.0'	4	0	0	0	0	6.0'	4	0	0	0	0
7.5'	3	1	1	0	0	7.5'	4	1	0	0	0	7.5'	5	0	0	0	0
9.0'	0	2	4	0													