

WWF

WELDED WIRE FORMS Product Data Sheet

WWF 1.5 x 10 (Welded Wire Form) is a steel product used for the construction of geosynthetic reinforced steep slope and retaining wall earth structures. The forms are manufactured with black steel and available in either black, electroglvanized or hot dipped galvanized meeting ASTM A123. The welded wire form is engineered to be provide a form for backfilling soil or rock during the construction of geosynthetic reinforced mechanically stabilized earth structures.

Welded Wire Form Properties

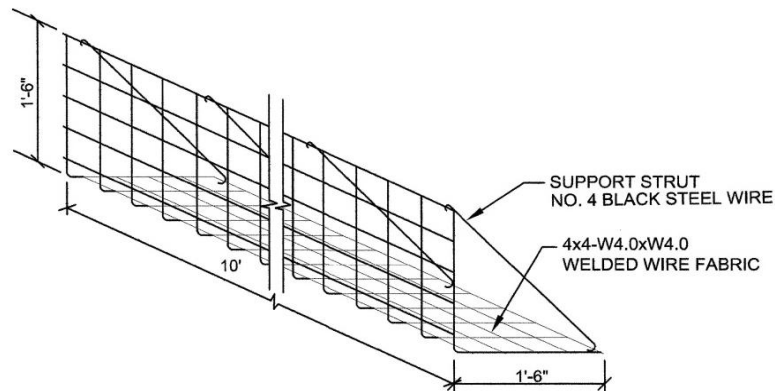
MATERIAL

Welded Wire Form - 4 x 4 - W 4.0 x W 4.0 Steel
(4" x 4" - 4 gauge x 4 gauge welded wire fabric)

Strut - No. 4 steel wire
(4 gauge pencil rod)

GEOMETRY

Welded Wire Form - 10' (3.05 m) wide x 1.5' (0.46 m) tall x 1.5' (0.46 m) deep
Strut - 2.13' (0.65 m)



October 2013

The use and selection of the product above should be completed by a competent design professional. Specifications as outlined above are subject to change. Earth Wall Products, LLC has compiled the above information based on tests conducted in accordance with recognized Industry Standards. Earth Wall Products will have no liability for consequential damages. No warranties are express or implied, including without limitation any warranties of fitness for a particular purpose, marketability, value, or condition. Regardless of the cause of action or legal theory, the liability of Earth Wall Products shall be limited to the fee paid to Earth Wall Products. Copyright 2013 by Earth Wall Products, LLC.

EARTH WALL PRODUCTS

Marietta, GA 30064 | PH 770.378.5012

earthwallproducts.com