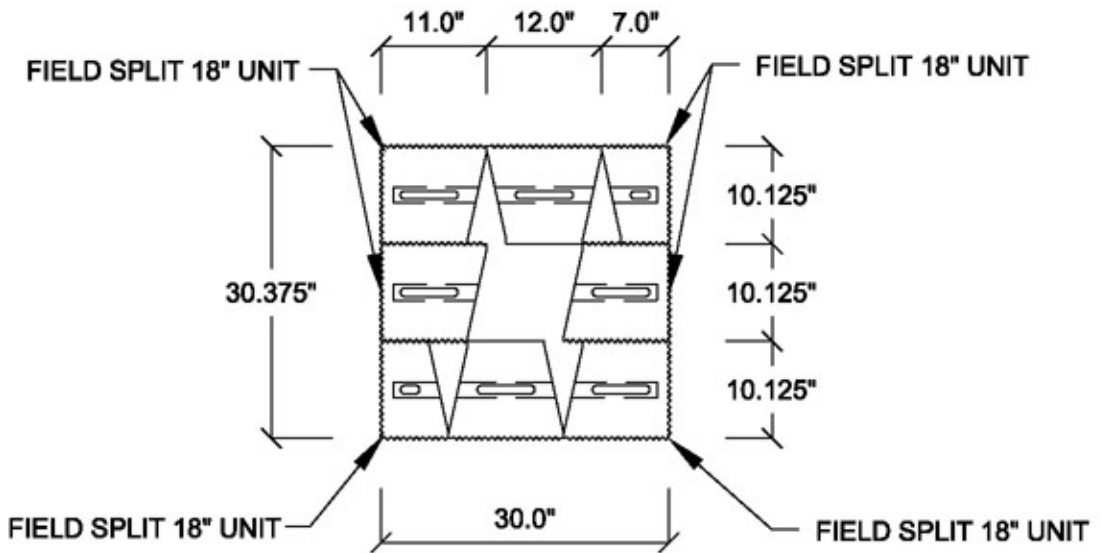


ROTATE BLOCK LAYOUT 90° EACH COURSE FOR THE HEIGHT OF THE COLUMN, TO OFFSET VERTICAL JOINTS



CAP BLOCK OPTIONAL  
(EXTERIOR MASONRY  
ADHESIVE REQUIRED  
TO SET BLOCK)

0 OFFSET FOR  
0° SETBACK

FINISHED  
GRADE

24" MAX HEIGHT

FINISHED  
GRADE

6" MIN.

***COLUMN DETAIL***

SCALE: 1" = 20"

SEE LEVELING PAD  
DETAIL